



**HANGSHI STAINLESS STEEL  
PRODUCTS FACTORY**



## STAINLESS STEEL WIRE

**30+**

**MANUFACTURING  
EXPERIENCE**



WeChat



WhatsApp

## MAIN BUSINESS

### Stainless steel wire :

Medium Hard Wire / Spring Steel Wire / Soft Steel Wire /  
Filament Steel Wire / Flat Steel / Round Rod /  
410/430 Stainless steel Wire / Solder Wire

# ABOUT US

XINGHUA HANGSHI STAINLESS PRODUCTS FACTORY

INNOVATION / QUALITY / INTEGRITY



**INTEGRATING R&D,  
PRODUCTION AND SALES**

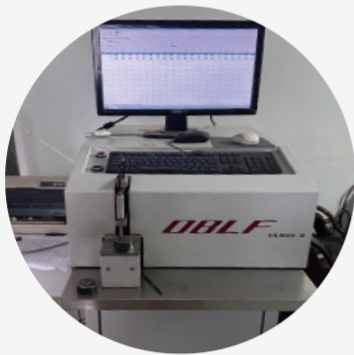
## FACTORY

XINGHUA HANGSHI STAINLESS PRODUCTS FACTORY was founded in 2002. It is a comprehensive enterprise that integrates the development, development, production and sales of stainless steel products. The main products of this factory are stainless steel wires (medium hard lines, full soft lines, full hard lines), stainless steel wire and its derivative re-processing products. The selection of materials, advanced craftsmanship, complete detection equipment, stable and reliable product quality. Our factory has self-employed import and export rights, its products sell well in more than 30 provinces, municipalities, and autonomous regions in the country, and they are exported to Southeast Asian countries such as Europe and the United States, the Middle East, South Korea, Vietnam, and Indonesia. I sincerely welcome friends at home and abroad to come to visit, visit the guidance, and take care of it.



# FACTORY

XINGHUA HANGSHI STAINLESS PRODUCTS FACTORY



MATERIAL DETECTION



HARDNESS TEST



ROCKWELL HARDNESS MACHINE



TESTS OF TENSILE STREAM



MATERIAL DETECTION



SALT SPRAY TEST

**01**



Stainless steel  
Medium hard wire

**02**



Stainless steel  
Fully soft wire

**03**



Stainless steel  
Bright full hard wire

**04**



Stainless steel  
Matte full hard wire

**05**



Stainless steel  
Round rod

**06**



Screw wire

**07**



Stainless iron wire

**08**



Flat wire /  
special-shaped steel

**09**



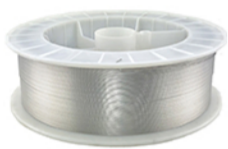
Shaft wire

**10**



Micro straight wire

**11**



Stainless steel  
welding wire

**12**



Stainless steel  
welding stick

**13**



Round coil

**14**



Stainless steel  
fasteners

**15**



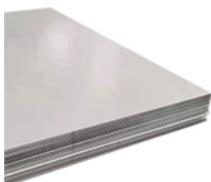
Stainless steel flange

**16**



Wire rope

**17**



Stainless steel plate

**18**



Stainless steel strip

**19**



Stainless steel pipe

**20**



Wire forming



### **BRIGHT STAINLESS STEEL SEMI-HARD WIRE**

Material : 201(669) / 202 / 302 / 304 / 316(L)

Diameter :  $\Phi$ 0.2mm~15.0mm

Surface : Smooth



### **BRIGHT STAINLESS STEEL FULL-SOFT WIRE**

Material : 201(669) / 202 / 302 / 304 / 316(L)

Diameter :  $\Phi$ 1.0mm~15.0mm

Surface : Smooth



### **BRIGHT / MATTE STAINLESS STEEL FULL-HARD SPRING WIRE**

Material : 201(669) / 202 / 302 / 304 / 316(L)

Diameter :  $\Phi$ 1.0mm~15.0mm

Surface : Smooth

## STAINLESS STEEL SHAFT WIRE

Material : 201(669) / 202 / 302 / 304 / 316(L)

Diameter :  $\Phi$ 1.0mm~15.0mm

Surface : Smooth



## WIREROPE

Material : 201(669) / 202 / 302 / 304 / 316(L)

Diameter :  $\Phi$ 1.0mm~15.0mm

Surface : Smooth



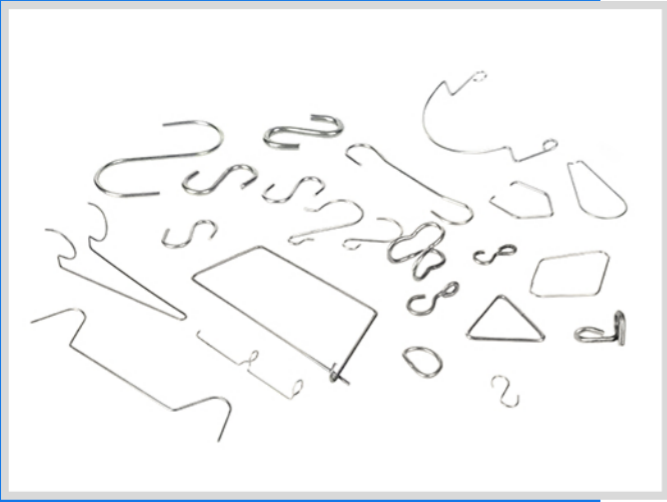
## STAINLESS STEEL STRAIGHT WIRE

Material : 201(669) / 202 / 302 / 304 / 316(L)

Diameter :  $\Phi$ 1.0mm~15.0mm

Surface : Smooth





## WIRE FORMING

Material : 201(669) / 202 / 302 / 304 / 316(L)

Diameter :  $\Phi$ 1.0mm~15.0mm

Surface : Smooth



## STAINLESS STEEL PIPE

Material : 201(669) / 202 / 302 / 304 / 316(L)

Diameter :  $\Phi$ 1.0mm~15.0mm

Surface : Smooth



## STAINLESS STEEL BRIGHT SOLID ROD

Material : 201(669) / 202 / 303 / 304 / 316(L)

Diameter :  $\Phi$ 1.0mm~15.0mm

Surface : Smooth

## STAINLESS STEEL WELDING STICK

Material : 201(669) / 304(D) / 316(L)

Diameter :  $\Phi$ 0.1mm~13.0mm

Surface : Smooth

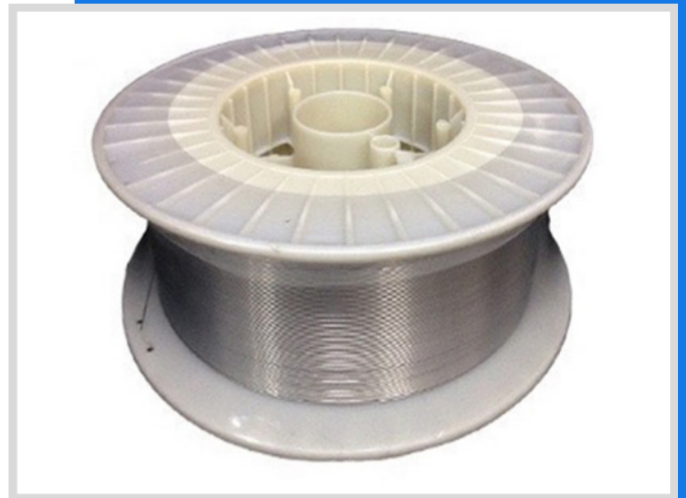


## STAINLESS STEEL WELDING WIRE

Material : 201(669) / 304(D) / 316(L)

Diameter :  $\Phi$ 0.1mm~13.0mm

Surface : Smooth



## STAINLESS IRON WIRE

Material : 409 / 410 / 420 / 430(F)

Diameter :  $\Phi$ 1.0mm~100.0mm

Surface : Smooth / Black



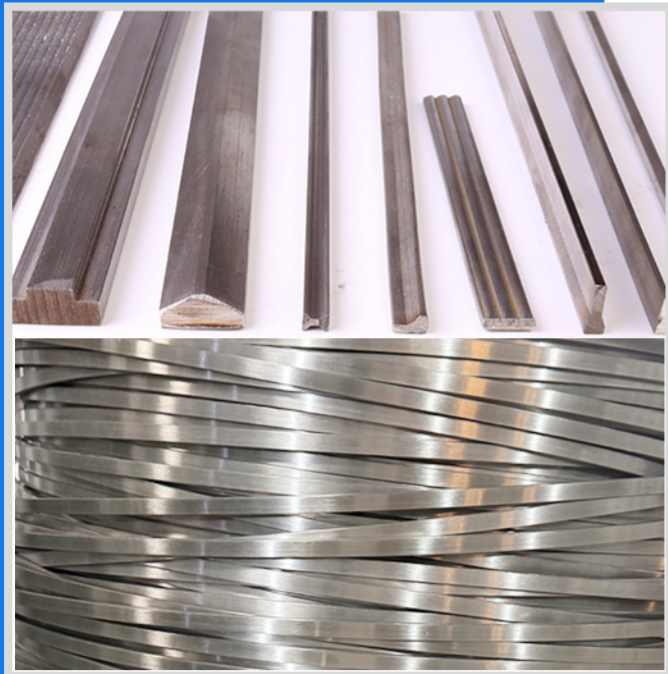


## STAINLESS STEEL FASTENER

Material : 201(669) / 202 / 302 / 304 / 316(L)

Diameter :  $\Phi$ 1.0mm~15.0mm

Surface : Smooth



## FLAT WIRE / SPECIAL-SHAPED STEEL

Material : 201(669) / 202 / 302 / 304 / 316(L)

Diameter :  $\Phi$ 1.0mm~15.0mm

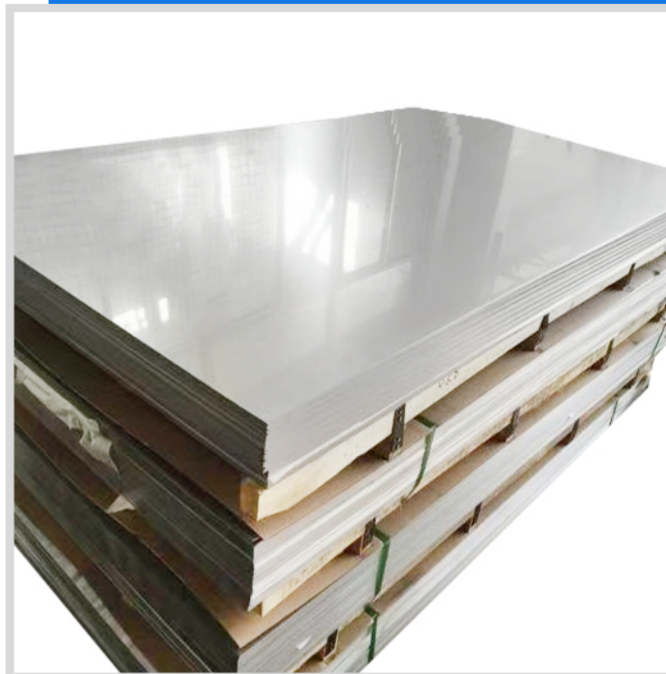
Surface : Brushed surface / polished surface /  
ground surface / mirror surface

## STAINLESS STEEL PLATE

Material : 201(669) / 202 / 302 / 304 / 316(L)

Diameter :  $\Phi$ 1.0mm~15.0mm

Surface : Smooth



## STAINLESS STEEL COIL

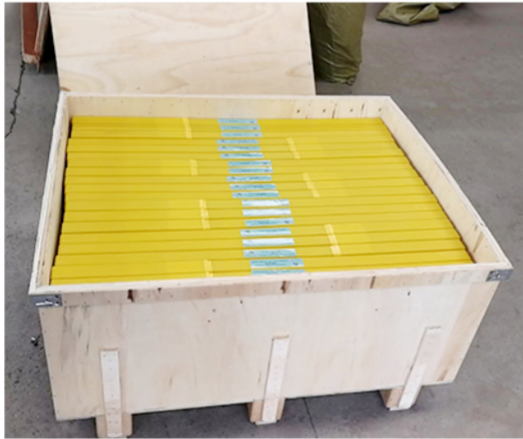
Material : 201(669) / 202 / 302 / 304 / 316(L)

Diameter :  $\Phi$ 1.0mm~15.0mm

Surface : Smooth



# PRODUCT PACKAGING



# PRODUCT MATERIAL TABLE

	C	Si	Mn	P≤	Ss	Cr	Mo	Ni	other
669(201)	0.078	0.4	13.02	0.041	0	12.18	0.03	1.33	/
201cu	≤0.15	≤1.00	5.5-7.5	0.06	0.03	16-18	-	3.5-5.5	NS0.25
202	≤0.15	≤1.00	7.5-10	0.06	0.03	17-19	-	4.0-6.0	N≤0.25
301	≤0.15	≤1.00	≤2.00	0.45	0.03	16-18	-	6.0-8.0	-
302	≤0.15	≤1.00	≤2.00	0.045	0.03	17-19	-	8.0-10.0	-
303	≤0.15	≤1.00	≤2.00	0.2	≥0.015	17-19	≤0.6	8.0-10.0	-
304	≤0.08	≤1.00	≤2.00	0.045	0.03	18-20	-	8.0-10.5	-
304L	≤0.03	≤1.00	≤2.00	0.045	0.03	18-20	-	9.0-13	-
305	≤0.12	≤1.00	≤2.00	0.045	0.03	17-19	-	10.5-13	-
309S	≤0.08	≤1.00	≤2.00	0.045	0.03	22-24	-	12-15	-
310S	≤0.08	≤1.5	≤2.00	0.045	0.03	24-26	-	19-22	-
316	≤0.08	≤1.00	≤2.00	0.045	0.03	16-18	2-3	10-14	-
316L	≤0.03	≤1.00	≤2.00	0.045	0.03	16-18	2-3	12-15	-
317	≤0.08	≤1.00	≤2.00	0.045	0.03	18-20	3-4	11-15	-
317L	≤0.03	≤1.00	≤2.00	0.045	0.03	18-20	3-4	11-15	-
321	≤0.08	≤1.00	≤2.00	0.045	0.03	17-19	-	9-13	Ti≥5xC
405	≤0.08	≤1.00	≤1.00	0.04	0.03	11.5-14.5	-	≤0.6	AL0.1-0.3
420F	0.26-0.4	≤1.00	≤1.25	0.06	≥0.15	12-14	≤0.6	≤0.6	-
430	≤0.12	≤0.75	≤1	0.04	0.03	16-18	-	≤0.6	-
420	0.02	0.27	0.33	0.021	0.001	16.88	-	0.07	-
410	0.197	0.21	0.22	0.03	0.001	12.78	-	0.07	-

# STAINLESS STEEL GRADE COMPARISON TABLE

序号	牌号	中国GB/T 20878			美国ASTM A959		日本JIS G4303 JIS G4311	国际ISO/TS 15510 ISO4955	欧洲EN 10088-1 EN 10095	
		统一数字代号	新牌号	旧牌号	UNS	ASTM			钢号	数字代号
1	202B	S35450	12Cr18Mn8Ni5N	1Cr18Mn8Ni5N	S20200	202	SUS202		X12CrMnNi18-9-5	1.4373
2	302HQ		022Cr18Ni9Cu3				SUSXM7			1.4567
3	30400	S30408	06Cr19Ni10	06Cr19Ni10	S30400	304	SUS304	X5CrNi18-10	X5CrNi18-10	1.4301
4	304L	S30403	022Cr19Ni10	00Cr19Ni10	S30403	304L	SUS304L	X2CrNi19-11	X2CrNi19-11	1.4306
5	304H	S30409	07Cr19Ni10		S30409	304H	SUS304H	X7CrNi18-9	X6CrNi18-10	1.4948
6	304HC1	S30480	06Cr18Ni9Cu2	0Cr18Ni9Cu2			SUS304J3			
7	304HC2	S30480	06Cr18Ni9Cu2	0Cr18Ni9Cu2			SUS304J3			
8	304HC3	S30488	06Cr19Ni9Cu3	0Cr19Ni9Cu3			SUSXM7	X3CrNiCu18-9-4	X3CrNiCu18-9-4	1.4567
9	310S	S31008	06Cr25Ni20	0Cr25Ni20	S31008	310S	SUS310S	X12CrNi23-12	X12CrNi23-12	1.4845
10	314	S38340	16Cr25Ni20Si2	1Cr25Ni20Si2	S31400	314	SUS314		X8CrNiSi25-21	1.4841
11	316	S31608	06Cr17Ni12Mo2	0Cr17Ni12Mo2	S31600	316	SUS316	X5CrNiMo17-12-2	X5CrNiMo17-12-2	1.4401
12	316L	S31603	022Cr17Ni12Mo2	00Cr17Ni14Mo2	S31603	316L	SUS316L	X2CrNiMo17-12-2	X2CrNiMo17-12-2	1.4404
13	316Ti	S31668	06Cr17Ni12Mo3Ti	0Cr18Ni12Mo3Ti	S31635	316Ti	SUS316Ti	X6CrNiMoTi17-12-2	X6CrNiMoTi17-12-2	1.4571
14	316LCu	S31683	022Cr18Ni14Mo2Cu	00Cr18Ni14Mo2Cu			SUS316JIL			
14	316LCu	S31683	022Cr18Ni14Mo2Cu	00Cr18Ni14Mo2Cu			SUS316JIL			

序号	牌号	中国GB/T 20878			美国ASTM A959		日本JISG4303 JIS G4311	国际ISO/TS 15510 ISO4955	欧洲EN 10088-1 EN 10095	
		统一数字代号	新牌号	旧牌号	UNS	ASTM			钢号	数字代号
16	317L	S31703	022Cr19Ni13Mo3	00Cr19Ni13Mo3	S31703	317L	SUS317L	X2CrNiMo19-14-4	X2CrNiMo18-15-4	1.4438
17	S32100	S32168	06Cr18Ni11Ti	0Cr18Ni10Ti	S32100	321	SUS321	X6CrNiTi18-10	X6CrNiTi18-10	1.4541
18	31803	S22253	022Cr22Ni5Mo3N		S31803		SUS329J3L	X2CrNiMoN22-5-3	X2CrNiMoN22-5-3	1.4462
19	2205	S22053			S32205	2205				
20	2507	S25073	022Cr25Ni7Mo4N		S32750	2507		X2CrNiMoN25-7-4	X2CrNiMoN25-7-4	1.4410
21	00Cr17	S11710	10Cr17	1Cr17	S43000	430	SUS430	X6Cr17	X6Cr17	1.4016
22	0Cr17	S11710	10Cr17	1Cr17	S43000	430	SUS430	X6Cr17	X6Cr17	1.4016
23	00Cr13	S41008	06Cr13	0Cr13	S41008	410S	SUS410S	X6Cr13	X6Cr13	1.4000
24	0Cr13	S41008	06Cr13	0Cr13	S41008	410S	SUS410S	X6Cr13	X6Cr13	1.4000
25	12Cr13	S41010	12Cr13	1Cr13	S41000	410	SUS410	X12Cr13	X12Cr13	1.4006
26	20Cr13	S42020	20Cr13	2Cr13	S42000	420	SUS420J1	X20Cr13	X20Cr13	1.4021
27	30Cr13	S42020	30Cr13	3Cr13	S42000	420	SUS420J2	X30Cr13	X30Cr13	1.4028